

# PORTFOLIO

From concept to production  
Design - BIM - CAD - ArchViz  
2009 - 2023 Summary



MARCELO TOURET

Architect

# ABOUT ME



## Marcelo Turret

Architect

School of Architecture

University of Buenos Aires, Argentina.

Experienced architect with extensive industry knowledge.

Expert in BIM and CAD, managing professionals worldwide and coordinating seamless projects remotely.

Passionate about transforming ideas into results.

Natural leader, capable of forming and integrating multidisciplinary teams to achieve excellence with the experience, competence, leadership, and teamwork required to become a valuable asset for any project.

# ARCHITECTURE 2009-2023

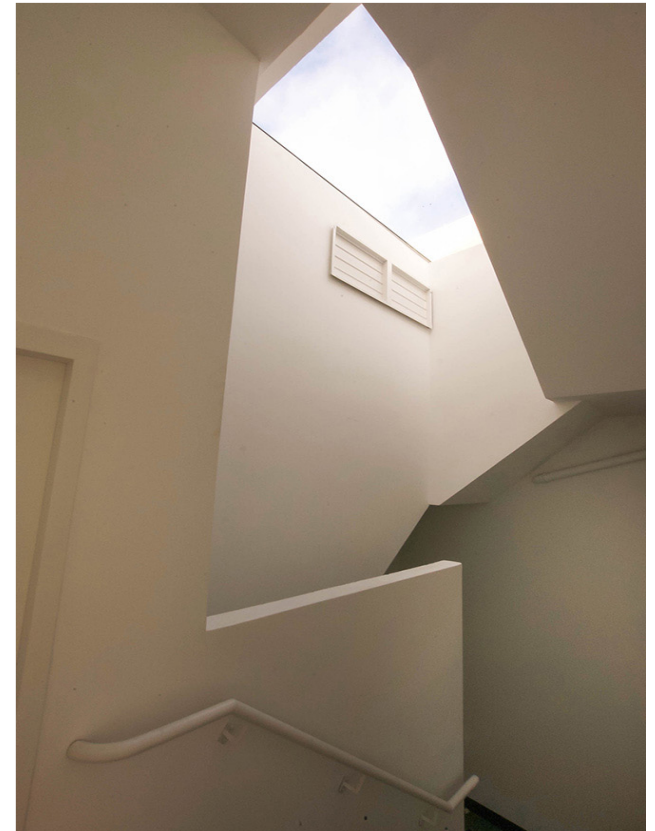
BUILDINGS  
DESIGNED,  
DOCUMENTED,  
AND DEVELOPED  
IN ARGENTINA

These buildings were developed  
entirely by the firm.

From the search, negotiation  
and purchase of potential land to  
municipal approval.

Including the morphological design,  
the layouts, and the Real Estate  
Development.

Detail of the Fire Staircase  
Modelle AdeF Building, Buenos Aires, Argentina





Balconies and upper terraces  
Modelle Plaza Building,  
Buenos Aires, Argentina

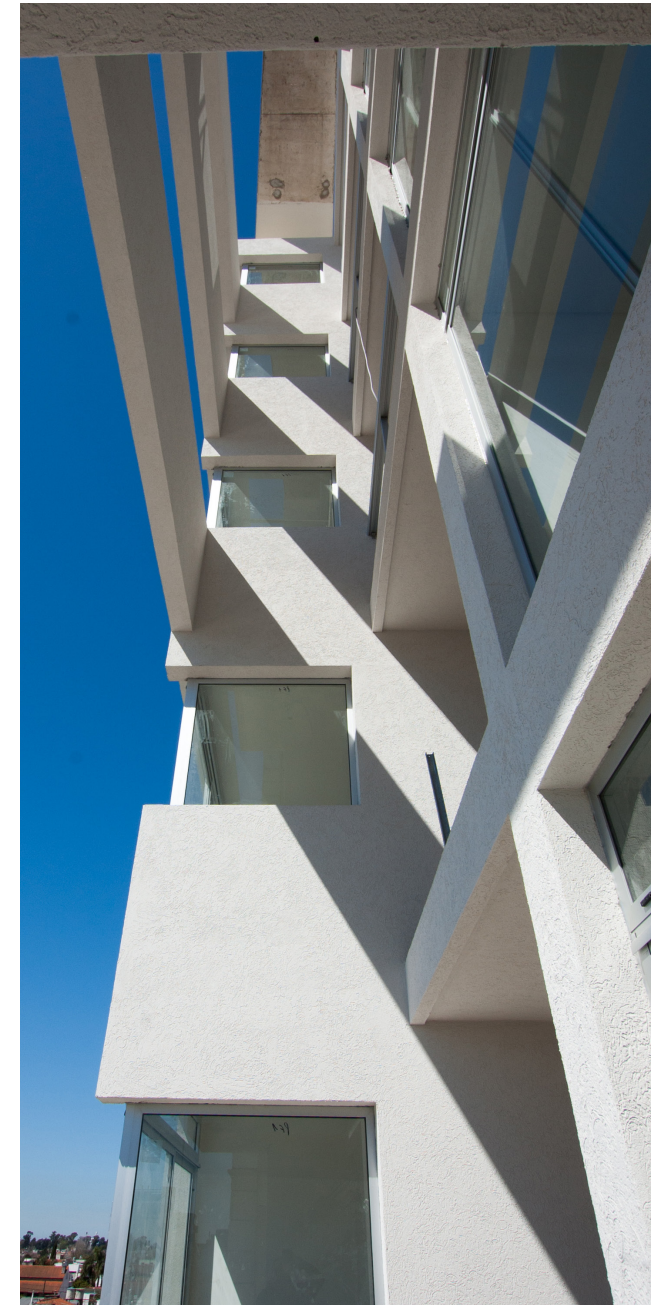


Detail of the Main Elevator Machine Room  
Modelle Ocampo Building,  
Buenos Aires, Argentina

Main facade  
Modelle Ocampo Building,  
Buenos Aires, Argentina



View of the building's water tank  
Modelle Plaza Building, Buenos Aires, Argentina



Vertical view of windows, recessed balconies and beam  
Modelle Zola Building, Wilde, Argentina



Access Detail View  
Modelle Ocampo Building, Buenos Aires, Argentina

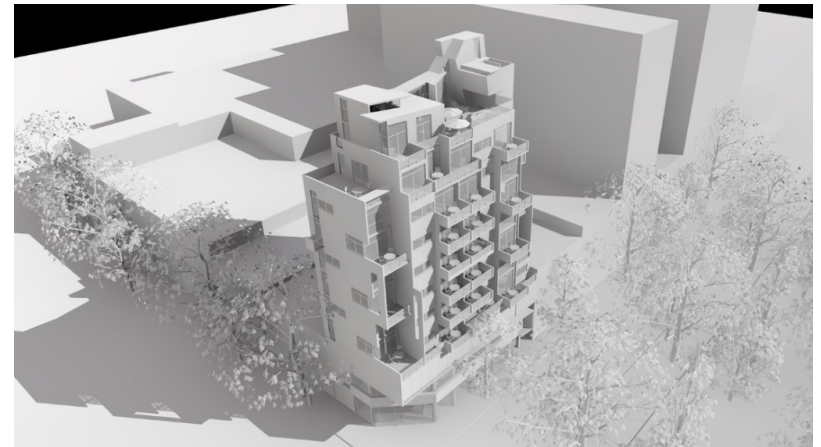


View of the building's top  
Modelle Plaza Building, Buenos Aires, Argentina

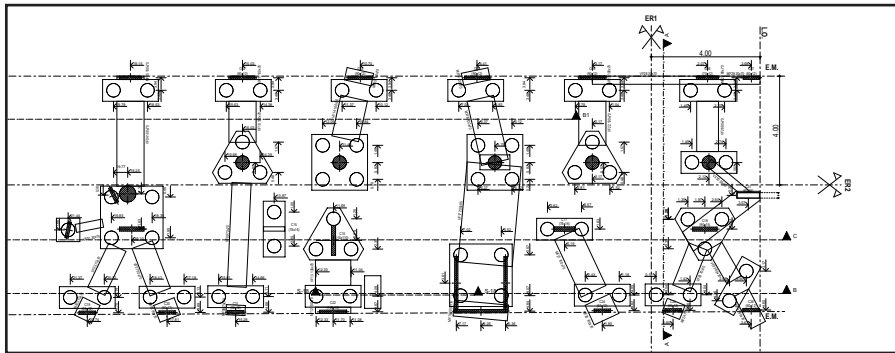


# BIM and CAD

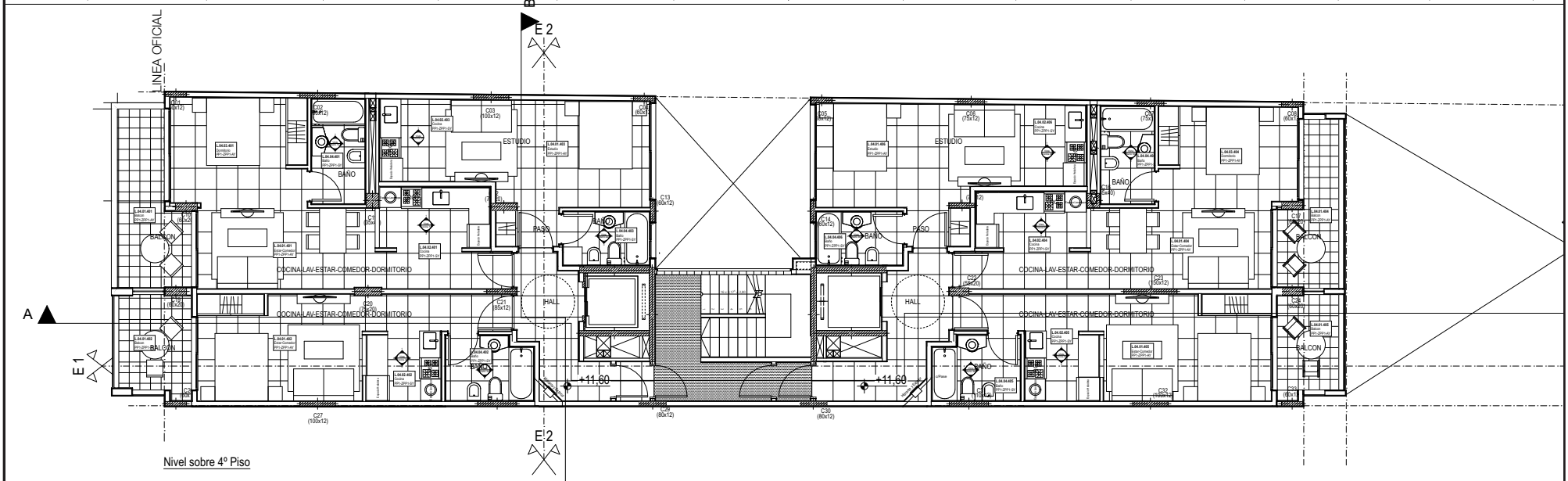
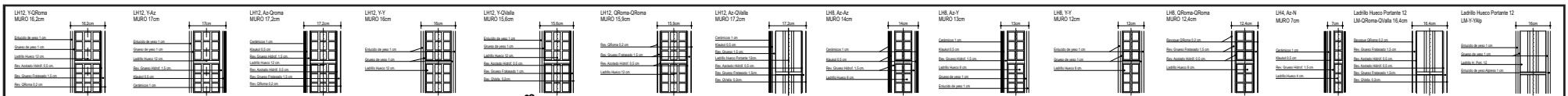
3D MODELING.  
COORDINATING  
STRUCTURAL ENGINEERS,  
ELECTRICAL AND  
PLUMBING CONSULTANTS.  
CONSTRUCTION  
DOCUMENTATION.  
FURNITURE LAYOUT.  
AND ANY NECESSARY  
DETAILS TO ACHIEVE A  
RESULT OF EXCELLENCE.



General volume of the building and its surroundings  
Modelle Plaza Building,  
Buenos Aires, Argentina

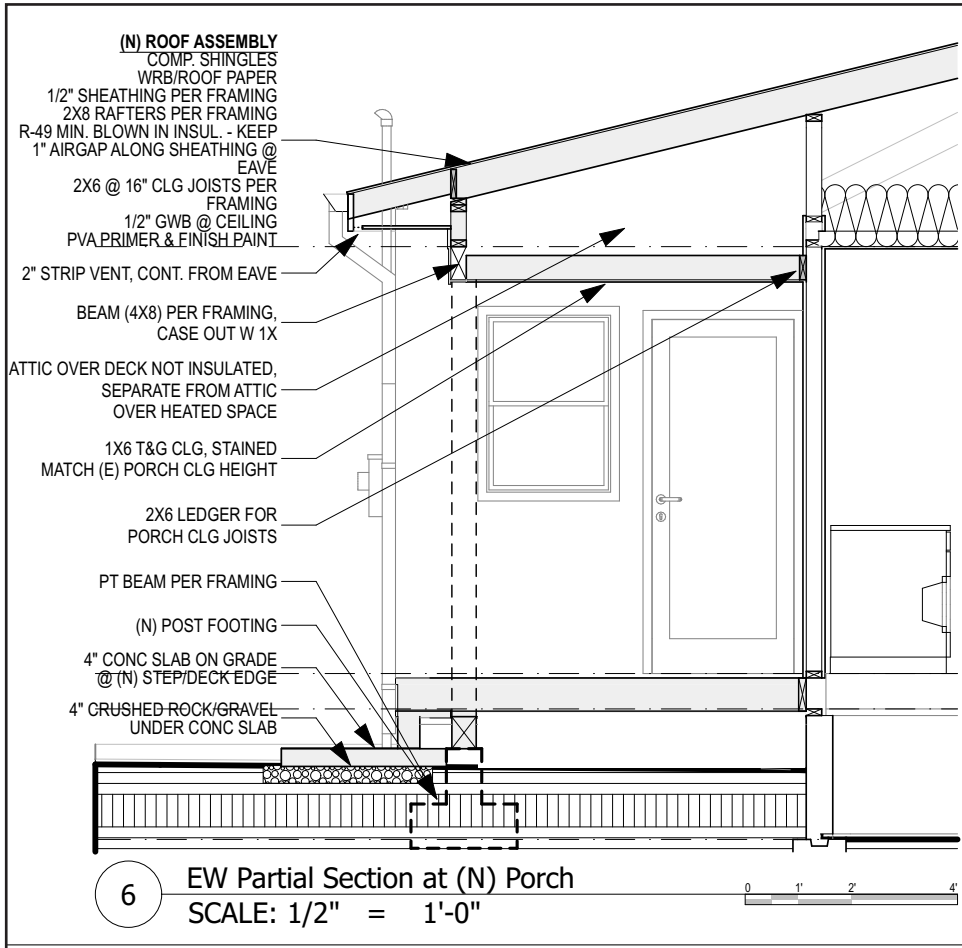


Stakeout survey plan with foundation heads and piles  
Modelle Zola Building, Wilde, Argentina



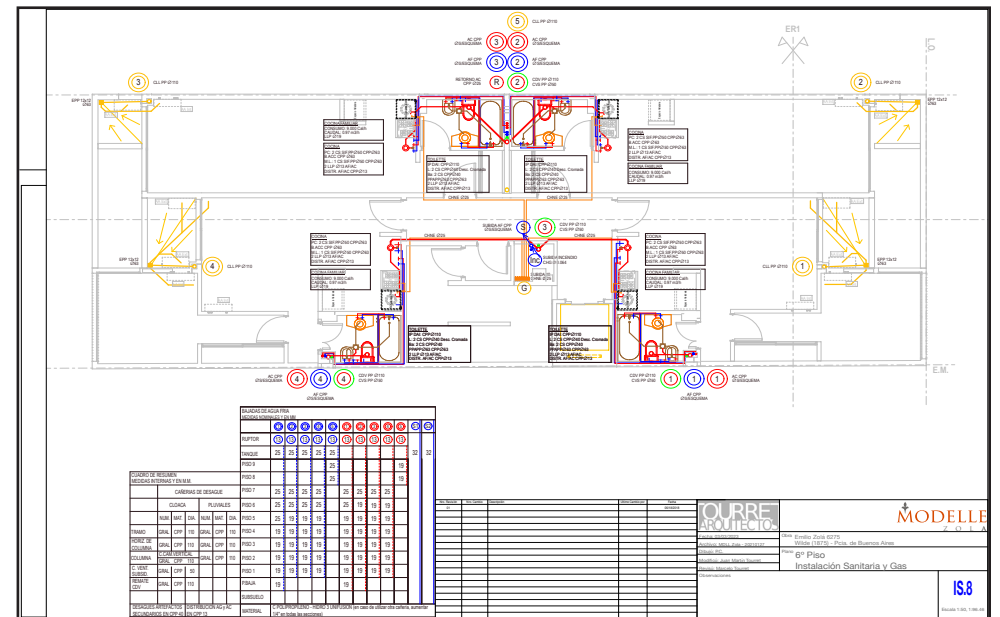
<b>Cerramientos</b> Separación entre unidades: LH 12 Separación entre ambientes: LH 8 Cerramiento Pisos: LH 4 Muros Exteriores: LH 12 Caja de escalera: LH Port. 12 Muro medianera: LH Port. 12 *Salvo expresa indicación contraria en Plano	<b>Designación Locales</b> Planta N° Local Depto. Local Estar-Comedor PP1-ZM-AY Zocalo Piso	<b>Muros</b> Term. cara 1 Term. cara 2 LH8, Y-Az. Material muro	<b>Carpinterías</b> Nombre carpintería Alto vano Ancho vano	<b>Pisos</b> PP1 - Porcelanato Pulido 1 PP2 - Porcelanato Pulido 2 PR - Porcelanato Rustico PBT - Piso Balcón/Terr. PE - Piso Estacionamiento CR - Cemento Rodillado PAT - Piso Atómico PCesp - Bloques Cesped	<b>Zocalos</b> ZPP1- Zócalo PP1 ZPP2 - Zócalo PP2 ZPP3 - Zócalo PP3 ZM - Zócalo madera ZP - Zócalo pintado ZBT - Z. Balcón/Terraza s/Z - sin Zócalo	<b>Terminación Muros</b> Y - Enlucido de yeso Az. - Azulejo RF - Rev. Frente RM - Red Medianera N - Nada	<b>Cielorraso</b> AY - Aplicado de yeso SY - Suspendido de yeso SDE - Susp. Durlock ext. AC - Aplicado de cal HVM - H*V* Mejorado	<b>Edificio Entre Rios</b> Av. Entre Rios 2162 Buenos Aires (1133) - CABA Tipo: Arquitectura Nivel: 4to. Piso Observaciones: <b>PLANO PARA COTIZACION NO APTO CONSTRUCCION</b>	<b>A-106</b> Fecha: 1/1/2020 Archivo: Entre Rios 2162 - 20200925 Dibujó: JMT Modificó: JMT Revisó: JMT
---	---	---	--	--	---	---	--	--	---

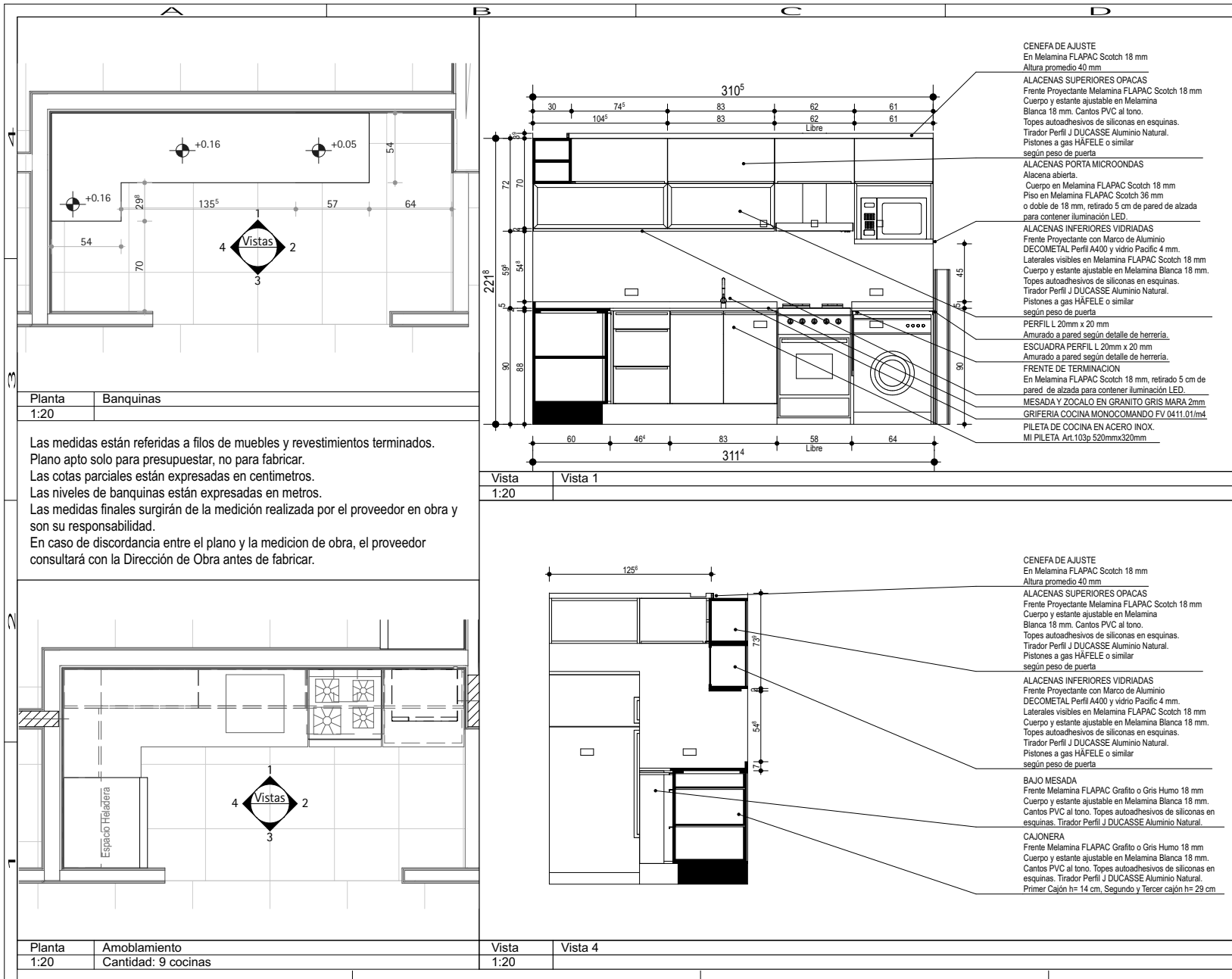
General Architectural and Furnishing Plan  
2162 Entre Rios Avenue, Buenos Aires, Argentina



Partial Section and detail  
 Seattle, USA

Plumbing design and installation plan  
 Modelle Zola Building, Wilde, Argentina





**TOURRET ARQUITECTOS**  
Porcel de Peralta 967, PB  
CABA, Argentina  
Tel.: +54 11 4641-6935  
email: info@tourret.com.ar  
www: www.tourret.com.ar

**PROYECTO**  
**Edificio Entre Rios 2162**

Av. Entre Rios 2162  
CABA, T008 - Buenos Aires  
Comitente: Binian Bait S.A.



**ASESORES**  
**Estudio Berdichevsky**  
Ingeniería Civil  
Concepción Arenal 2978 4º E  
CABA, Argentina  
Tel: +54 11 4772-4467  
Email: obras@berdichevsky.com.ar

**Tourret Arquitectos**  
Instalación Sanitaria, Contra Incendio y Gas  
Porcel de Peralta 967 PB  
CABA, Argentina  
Tel.: +54 11 4641-6935  
Email: info@tourret.com.ar

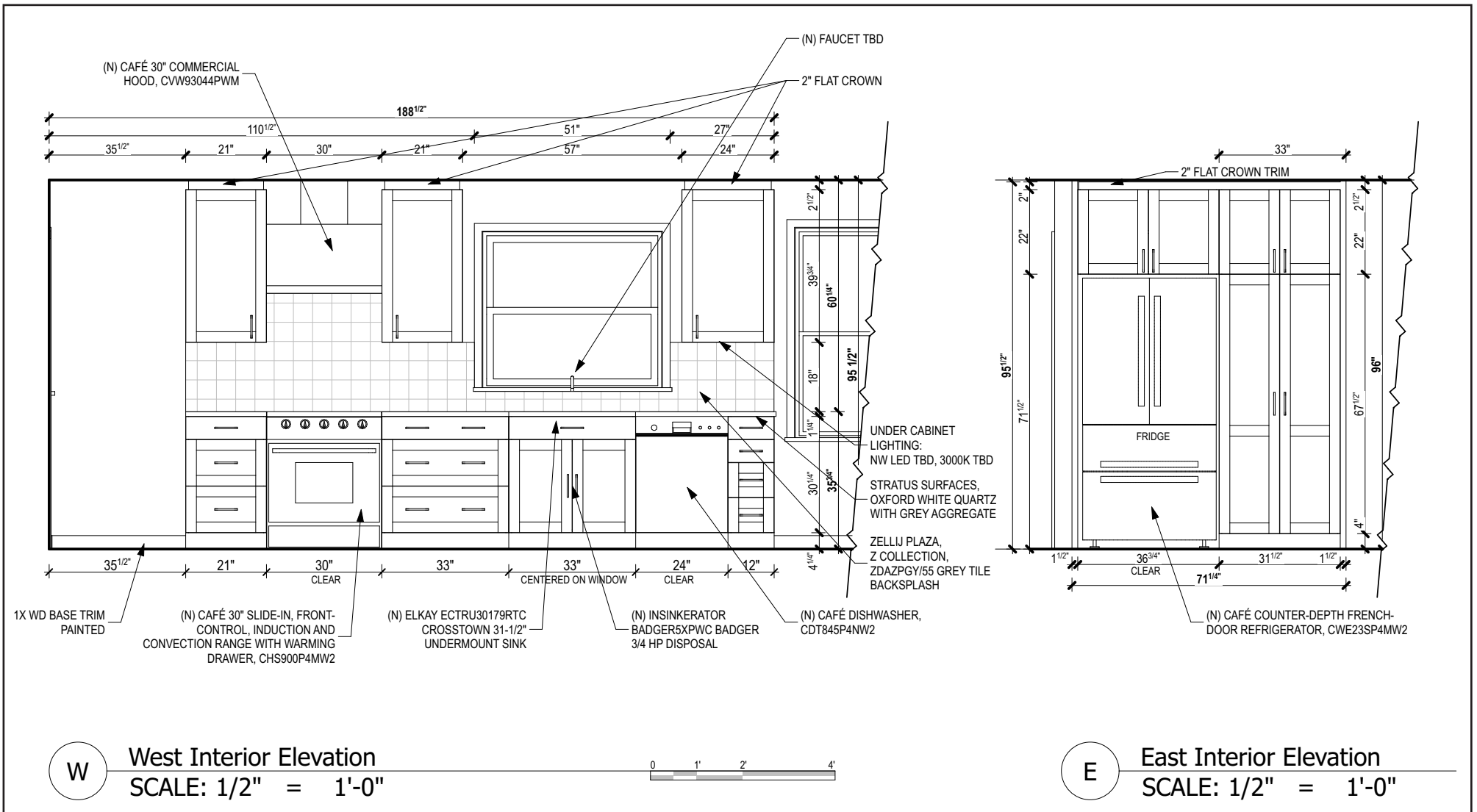
**PLANO DE Amoblamiento de Cocinas y Baños**  
Cocina 5 - 2' a 10'  
Cálculo: 2017  
Revisó: 1897  
Número de Archivo: Edificio Entre Rios 2162 - 20221104  
Impreso: 11/12/22 EDO PAU/TEC2  
COPYRIGHT: TOURRET ARQUITECTOS

**MODIFICACIONES**

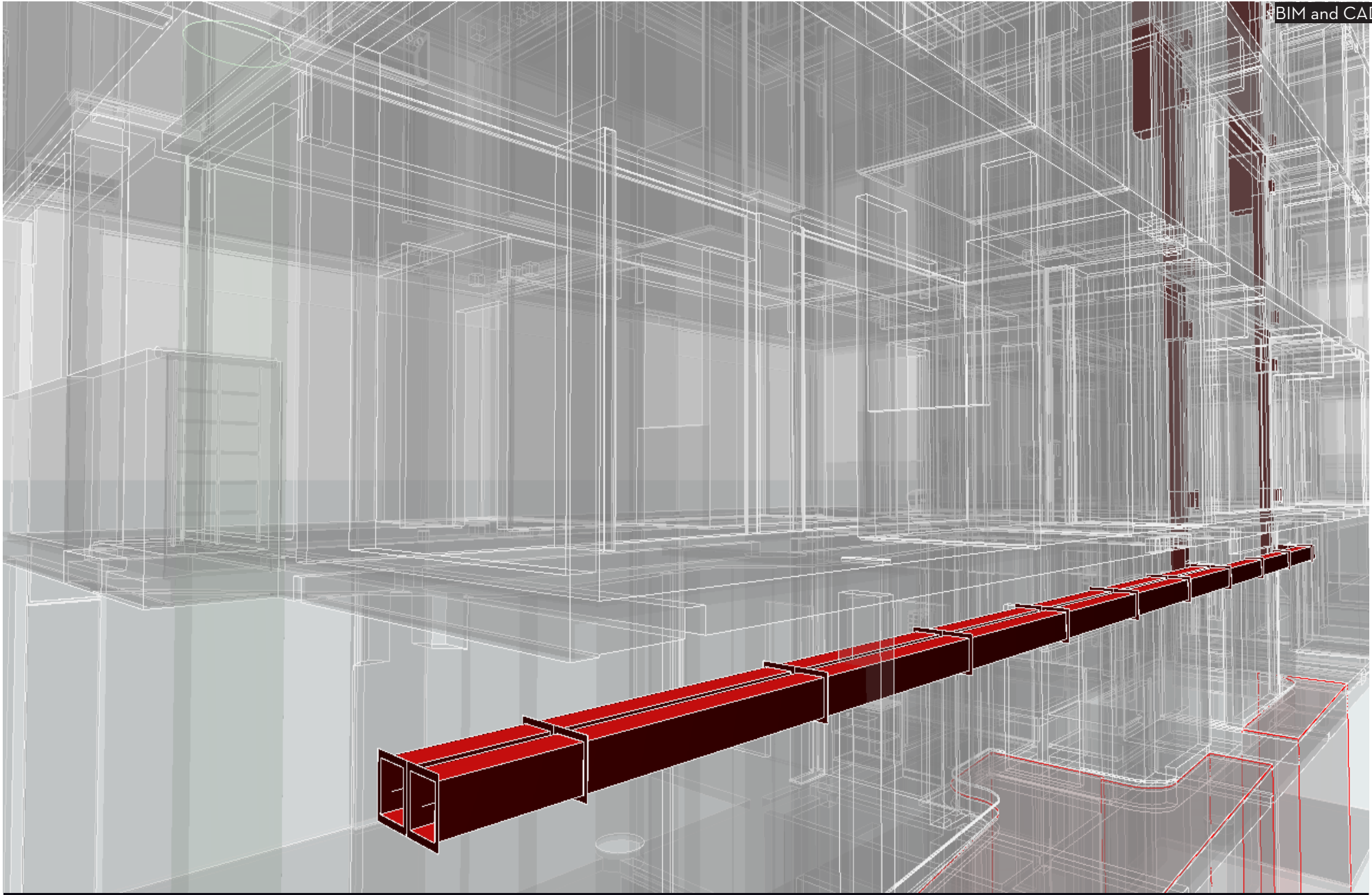
Mark	Date	Description

Escala  
**1:20**  
**A-805**

Kitchen plan and Interiors Views  
2162 Entre Rios Avenue, Buenos Aires, Argentina



Kitchen Interior Views  
Seattle, USA



Fire smoke evacuation and clean air injection ducts  
2162 Entre Rios Avenue, Buenos Aires, Argentina

# ARCHVIZ

ANALYSIS AND REALIZATION OF VISUAL TECHNOLOGIES THAT ENHANCE THE PROPOSED DESIGN USING THE MOST APPROPRIATE TOOL.

A PHOTOREALISTIC RENDER, A VIRTUAL TOUR, AN ANIMATION, OR A REPRESENTATION WITH WHICH THE CLIENT PREVIEWS THE BENEFITS OF THE ARCHITECTURAL PROJECT AND ITS SPACES WITH TOTAL ACCURACY.



Dining Room and Kitchen Rendering  
Seattle, USA



Living and Dining room  
Rendering  
Seattle, USA



Virtual Tour  
<https://tinyurl.com/28xedtax>



Kitchen Rendering  
Seattle, USA



Bathroom Rendering  
Roatán, Honduras



Complesso Smith  
Exterior renovation and rendering  
Lido degli Estensi, Ferrara, Italia






Rendering of Studio unit with balcony  
Modelle AdeF Building, Buenos Aires, Argentina

Rendering of living dining room and recessed balcony  
Modelle Zola Building, Wilde, Argentina





Lobby interior rendering with columns  
Modelle AdeF Building, Buenos Aires, Argentina



Address:  
967 Porcel de Peralta St.  
Buenos Aires, Argentina

Phone:  
Whatsapp: +54 11 41466956

Online:  
[mtouret@tourret.com.ar](mailto:mtouret@tourret.com.ar)  
[www.touret.com.ar](http://www.touret.com.ar)